

## In This Issue

Upcoming Events

PD Day - OCLC

Health Literacy Summit

OAAACE is Coming!

## In Every Issue

Matt's Tech Tips *NEW*

Employment  
Opportunities

Grant Opportunities

The Resource Room

Thoughts on Leadership

## Visit Our Calendar of Events

[www.ohioable.org](http://www.ohioable.org)

[www.neable.org](http://www.neable.org)

## Stay Connected

(Sign up for the  
NewsBriefs online)

[http://www.neable.org  
/misc/stay-connected](http://www.neable.org/misc/stay-connected)

## Contact Us

[www.neable.org](http://www.neable.org)

[info@neable.org](mailto:info@neable.org)

## Upcoming Events



- **Activities for Improving Listening Skills in the ESOL Classroom**  
2/28/2008  
3:00pm-5:30pm  
Henn Mansion
- **Using Authentic Materials in the Classroom**  
2/29/08  
9:00am-12:00pm  
Franklin Elementary School, Lakewood, OH
- **The Portfolio Connection: Connecting Teaching & Learning**  
2/29/2008  
9:30am-3:30pm  
Henn Mansion
- **New Teacher Orientation Part II**  
3/7/2008  
9:30am-3:00pm  
Henn Mansion
- **Spring Directors' Meeting**  
3/11/2008  
9:00am-4:00pm  
Great Wolf Lodge-Sandusky
- **New Teacher Orientation Part II \*SATURDAY\***  
3/15/2008  
9:30am-3:00pm  
Henn Mansion
- **BEST Plus Training**  
4/16/2008  
9:30am-3:30pm  
Columbus, OH

# ABLE PD Day

**ABLE PD Day**  
**April 14, 2008**  
**OCLC, Dublin, OH**



- **Lesson Planning Meets the Wild, Wild West**

Learn about the required elements for developing standards-based lessons, how to start with found (online) lessons and turn them into lessons that address the standards' components and benchmarks. Your lesson development will be around the GED Social Studies topic of the American West, so saddle up to Columbus and join the lesson planning wagon train!

- **Statewide Algebra Day**

Do you avoid the algebra on the GED test? Did you take algebra years ago and need a review? Do you want to make sure that the algebra that you are teaching is accurate? Then this workshop is for you! Come and brush up on those algebra skills needed to help your students successfully pass the GED and transition to higher education. The focus of this interactive workshop will be on algebra content. Registration is limited. Sharon has been with ABLE for 12 years and has been part of the NSF funded TIAN project.

- **Learning Disabilities 202**

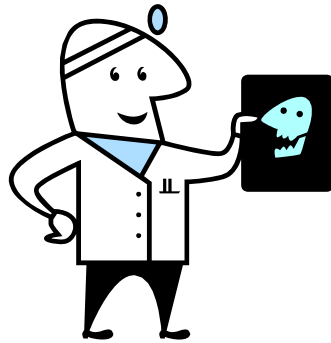
This session for instructors emphasizes instructional strategies, materials, software, resources, adaptations and accommodations that are useful when working with students with learning disabilities. In order to attend this workshop you must have completed LD 201. Registration begins at 9:00am; workshop begins at 9:30am.

- **The Portfolio Connection: Connecting Teaching and Learning**

This training will focus on providing classroom teachers with practical tools to use as they work with students to build a portfolio that captures the students' academic growth while in their programs. Presenters will model conferencing techniques and use portfolio sample activities to help teachers design a meaningful, useable, and efficient portfolio system for their classrooms.

- **BEST Plus Training**

Registration and continental breakfast begin at 9:00am, the training begins at 9:30am. The BEST Plus Training Workshop prepares participants to administer and score the test by providing an overview of the test, opportunities to practice delivery and scoring, and clarification of administration and scoring issues. Participants will recognize the importance of assessing oral language proficiency and be able to administer and score the test and interpret BEST Plus scores. If available, please bring your program's "Test Administrator Guide" book. PLEASE NOTE: TEST ADMINISTRATOR TRAINING IS REQUIRED BY THE CENTER FOR APPLIED LINGUISTICS, IN ORDER TO RECEIVE CERTIFICATION CAL REQUIRES THAT PARTICIPANTS NOT MISS MORE THAN 30 MINUTES OF THE TRAINING.



# Health Literacy Summit

**March 25-26, 2008**

Holiday Inn Select  
2501 South High School Road  
Indianapolis, IN  
(317) 244-6861

Health literacy is often defined as the ability to read, understand and act upon health-related information. Improving health literacy may improve the health status and quality of life of America's adults, especially among adults with marginal literacy skills. Join adult educators, health care workers and others interested in health literacy to find out about the research on health literacy and some resources for implementing health literacy programming.

If you have questions or want more information, contact:

Kaye Beall

[kaye\\_beall@worlded.org](mailto:kaye_beall@worlded.org)

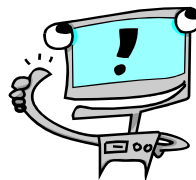
(765)717-3942



## OAAACE is Coming...

The Annual OAAACE Conference is right around the corner! This year's theme is "The Times, They Are A Changing." The conference will be held April 17-18, 2008 at The Crown Plaza North in Columbus, Ohio. Stay tuned for further information.

## Matt's Tech Tips



### **Know your electronic storage media**

These are the devices and formats used to access and save your digital information. This is also important because of the many formats that your instructional materials and resources are currently being delivered. A basic understanding of these technologies will hopefully enhance your ability to work with different devices and utilize the diverse resources available for your classroom.

### **First some core concepts:**

#### **Storage sizes:**

KB = Kilobytes are small, think Word documents

MB = Megabytes are big, think full length mp3 song, a picture slideshow, or short video clip

GB = Gigabytes are huge, think full length feature film with a crisp picture

TB = Terabyte is astronomical to the average user and is a bit of a geek fantasy, we will leave it there

**Optical Discs** – Includes many forms including CD-R, DVD-R and DVD-R Dual Layer, as well as newer Blu-ray and HD DVD formats.

[CD-R] (Up to 700 MB) – You can write information to it once and access it later.

[DVD-R] (4.3 GB – 8.6 GB Dual Layer) – Looks like a [CD-R], but offers a whole lot more storage space.

**Optical Disc Drives** - You can find out what your computer can handle by looking physically at the front of the tray that you place discs in.

- A drive labeled [CD-R] can read discs, but won't write to them.
- A [CD-R/W] can read and write discs.
- A [CD-R/W] and [DVD-R] means you can read/write [CD-R] and read-only [DVD-R].
- A [CD-R/W] and [DVD-R/W] means you can read/write to most discs.



## Employment Opportunities

These websites offer listings of over 10,000 jobs available in Northeast Ohio. They could be quite useful to your students. Please pass these resources on!

[www.neotechjobs.com](http://www.neotechjobs.com)

[www.jobmagnet.com](http://www.jobmagnet.com)

## Grant Opportunities



### **Dollar General Adult Literacy Grants**

During this request for proposals period, the Dollar General Literacy Foundation will award grants to direct service providers in one or all of the following focus areas ONLY:

- Adult Basic Education
- GED Preparation
- English for Speakers of Other Languages

The deadline for proposals is March 4, 2008. For more information, eligibility and applications, please visit: [www.dollargeneral.com](http://www.dollargeneral.com)



# The Resource Room

## **ALTERNATIVE DELIVERY PROFESSIONAL DEVELOPMENT**

### ***Do You Speak American? – (register on the Training Calendar)***

This comprehensive professional development allows the participant to join Robert McNeil on his travels across the United States to answer important sociolinguistic questions such as: What is Standard English? What is the current state of written English? Do we engage in dialect bias? Is language part of social identity? What is the future of American English?

For more information, refer to: CAL's Resource Center highlights American Dialects at <http://www.cal.org/topics/dialects/aae.html>.

CREATE – Free Webcasts on Teaching Language Learners  
<http://www.cal.org/create/events/webcasts.html>.

## **New Resources in the NEABLE Library**

Go to [www.neablelibrary.org](http://www.neablelibrary.org)

## **MULTICULTURAL COLLECTION**

### ***Of Beetles and Angels: A Boy's Remarkable Journey from a Refugee Camp to Harvard*** by Mawi Asgedom

The author insists his story is not unusual but similar to that of hundreds of thousands of Eritrean and Ethiopian refugees who fled the civil wars of their homelands. A child of an Eritrean mother and Ethiopian father, Mawi lives in a refugee camp in Sudan, is resettled in the Midwest, and finally, after surviving racial prejudice, language barriers and financial disadvantage, builds a new life for himself in the United States. Now a noted motivational speaker living in Chicago, Mawi has written his first book which is a compelling read for teachers and students alike.

## **FOR LISTENING AND SPEAKING**

***Cathy's Cards: Instant Conversation in the Classroom*** (Combined edition)  
Alta Books.

Topics covered are: Education, Technology/Computers, Money and Jobs, Family and Friends, Home, Routines, Health, and Leisure, Food, Personal Preferences, and Global Issues. Perfect practice to prepare for BEST Plus!!!

***All About The USA, A Cultural Reader***, Level 4, Second Edition with audio CD. Pearson Longman, 2008

"The new edition has fresh content and a friendly, full-color design." There are 24

units about American places, events, and people such as Yo-Yo Ma, Oprah Winfrey, Georgia O'Keefe, Susan Butcher, Lucas and Spielberg, and the Google Guys.

**ESOL Basic Text**

**NEW! *Excellent English Level 1***, McGraw-Hill, 2008

Excellent English equips students with the grammar and skills they need to access community resources, while developing a foundation for long-term career and academic success. Clear and colorful layout!! Career oriented!!!

---

## Thoughts on Leadership

Thoughts on Leadership is presented as an attachment to the Friday NewsBriefs.